

### TWO GROOVE SHEAVES COMBINATION GROOVE FOR "4L" or "A" Belts and "5L" or "B" Belts

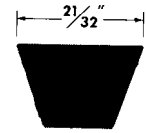


TABLE No. 1

STOCK SIZES - FINISHED BORE

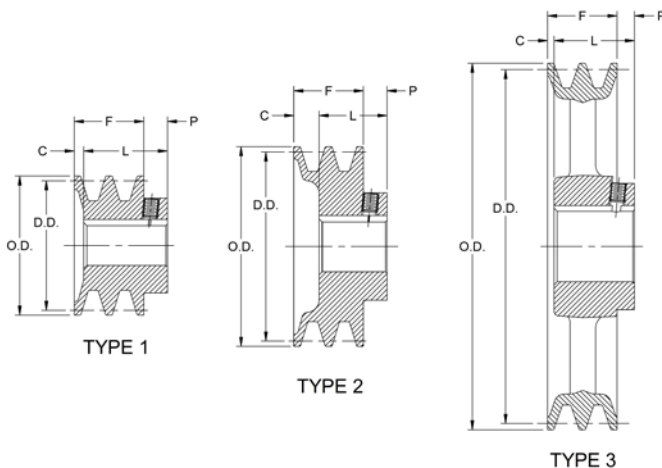
PART No.	DIAMETERS			TYPE	STOCK BORES MARKED "X"									DIMENSIONS				WT. LBS.
	OUTSIDE	DATUM "A"	DATUM "B"		1/2"	5/8"	3/4"	7/8"	1"	1 1/8"	1 3/16"	1 3/8"	1 7/16"	F	L	P	C	
2BK25	2.50	1.90	2.30	1	X	X	X	X					1.75	1.97	0.47	0.25	1.56	
2BK27	2.70	2.10	2.50	1	X	X	X	X	X				1.75	1.97	0.47	0.25	2.01	
2BK28	2.95	2.20	2.60	1	X	X	X	X	X	X			1.75	1.97	0.47	0.25	2.14	
2BK30	3.15	2.40	2.80	1	X	X	X	X	X	X			1.75	1.97	0.47	0.25	2.4	
2BK32	3.35	2.60	3.00	1		X		X	X	X			1.75	1.97	0.47	0.25	2.62	
2BK34	3.55	2.80	3.20	1		X	X	X	X	X			1.75	1.97	0.47	0.25	2.92	
2BK36	3.75	3.00	3.40	1			X	X	X	X		X	1.75	1.97	0.47	0.25	3.42	
2BK40	3.95	3.20	3.60	2		X	X	X	X	X			1.75	1.47	0.47	0.75	3.36	
2BK45	4.25	3.50	3.90	2				X	X	X		X	1.75	1.47	0.47	0.75	3.65	
2BK47	4.45	3.70	4.10	2				X	X	X		X	1.75	1.47	0.47	0.75	3.86	
2BK50	4.75	4.00	4.40	2			X		X	X		X	1.75	1.47	0.47	0.75	4.42	
2BK52	4.95	4.20	4.60	2				X	X	X		X	1.75	1.47	0.47	0.75	5.59	
2BK55	5.25	4.50	4.90	2					X	X		X	1.75	1.47	0.47	0.75	4.74	
2BK57	5.45	4.70	5.20	2					X	X		X	1.75	1.47	0.47	0.75	5.14	
2BK60	5.75	5.00	5.40	3			X	X	X	X		X	1.75	1.47	0.47	0.75	4.9	
2BK62	5.95	5.20	5.60	3					X	X		X	1.75	1.47	0.47	0.75	5.5	
2BK65	6.25	5.50	5.90	3					X	X		X	1.75	1.47	0.47	0.75	6.69	
2BK67	6.45	5.70	6.10	3					X	X		X	1.75	1.46	0.47	0.76	6.35	
2BK70	6.75	6.00	6.40	3			X	X	X	X	X	X	1.75	1.59	0.34	0.50	8.42	
2BK80	7.75	7.00	7.40	3			X	X	X	X	X	X	1.75	1.59	0.34	0.50	9.31	
2BK90	8.75	8.00	8.40	3			X	X	X	X	X	X	1.75	1.59	0.34	0.50	8.62	
2BK100	9.75	9.00	9.40	3			X	X	X	X	X	X	1.75	1.59	0.34	0.50	12.56	
2BK110	10.75	10.00	10.40	3					X	X		X	1.75	1.59	0.34	0.50	12.84	
2BK120	11.75	11.00	11.40	3					X	X		X	1.75	1.75	0.34	0.50	16.8	
2BK130	12.75	12.00	12.40	3					X	X		X	1.75	1.59	0.34	0.50	16.04	
2BK140	13.75	13.00	13.40	3					X	X		X	1.75	1.59	0.34	0.50	18.37	
2BK160	15.75	15.00	15.40	3					X	X		X	1.75	1.59	0.34	0.50	18.69	
2BK190	18.75	18.00	18.40	3					X	X		X	1.75	1.59	0.34	0.50	25.5	

### STANDARD KEYSEATS

TABLE No. 2

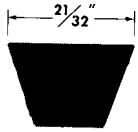
BORE RANGE	KEYSEAT
1/2"	None
5/8" to 7/8"	3/16" x 3/32"
15/16 to 1 3/16	1/4 x 1/8
1 3/8	5/16 x 5/32
1 7/16	3/8 x 3/16

INDIVIDUALLY PACKAGED  
HOLLOW HEAD SETSCREWS  
PAINTED



◆  
IDEAL FOR  
ORIGINAL  
EQUIPMENT  
◆  
ACCURATELY  
MACHINED  
AND  
STATICALLY  
BALANCED  
◆



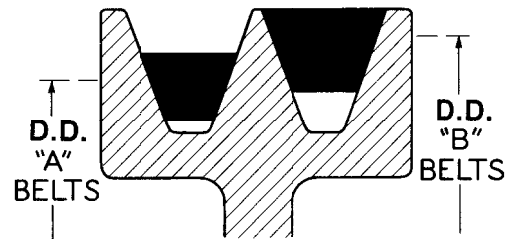


### TWO GROOVE SHEAVES COMBINATION GROOVE FOR "4L" or "A" Belts and "5L" or "B" Belts

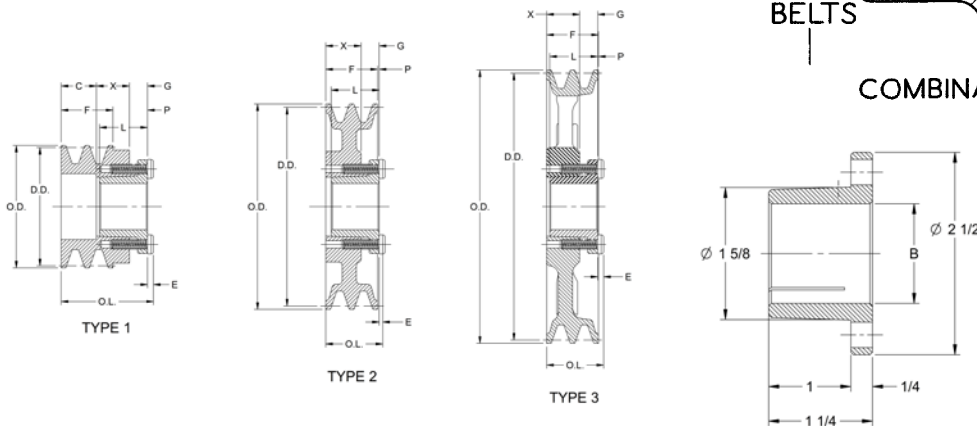
TABLE No. 1 STOCK SIZES - WITH SPLIT TAPER BUSHINGS

PART No.	DIAMETERS			TYPE	DIMENSIONS								WT. LBS. LESS BUSH.
	O.D.	DATUM "A"	DATUM "B"		O.L.	F	L	P	C	X	G	E	
2BK32H	3.35	2.60	3.00	1	2.78	1.75	1.28	0.88	1.31	0.88	0.44	0.16	2.25
2BK34H	3.55	2.80	3.20	1	2.78	1.75	1.28	0.88	1.31	0.88	0.44	0.16	2.58
2BK36H	3.75	3.00	3.40	1	2.78	1.75	1.28	0.88	1.31	0.88	0.44	0.16	2.08
2BK40H	3.95	3.20	3.60	1	2.78	1.75	1.28	0.88	1.31	0.88	0.44	0.16	2.41
2BK45H	4.25	3.50	3.90	1	2.78	1.75	1.28	0.88	1.31	0.88	0.44	0.16	3.09
2BK47H	4.45	3.70	4.10	2	1.75	1.75	1.28	0.44		0.88	0.44	0.16	3.04
2BK50H	4.75	4.00	4.40	2	1.75	1.75	1.28	0.44		0.88	0.44	0.16	3.42
2BK52H	4.95	4.20	4.60	2	1.75	1.75	1.28	0.44		0.88	0.44	0.16	3.60
2BK55H	5.25	4.50	4.90	2	1.75	1.75	1.28	0.44		0.88	0.44	0.16	3.84
2BK57H	5.45	4.70	5.10	2	1.75	1.75	1.28	0.44		0.88	0.44	0.16	4.39
2BK60H	5.75	5.00	5.40	2	1.75	1.75	1.28	0.44		0.88	0.44	0.16	4.55
2BK62H	5.95	5.20	5.60	2	1.75	1.75	1.28	0.44		0.88	0.44	0.16	5.05
2BK65H	6.25	5.50	5.90	3	1.75	1.75	1.28	0.19	0.25	0.88	0.44	0.16	4.75
2BK67H	6.45	5.70	6.10	3	1.75	1.75	1.28	0.19	0.25	0.88	0.44	0.16	4.85
2BK70H	6.75	6.00	6.40	3	1.75	1.75	1.28	0.19	0.25	0.88	0.44	0.16	5.13
2BK80H	7.75	7.00	7.40	3	1.75	1.75	1.28	0.19	0.25	0.88	0.44	0.16	6.90
2BK90H	8.75	8.00	8.40	3	1.75	1.75	1.28	0.19	0.25	0.88	0.44	0.16	7.31
2BK100H	9.75	9.00	9.40	3	1.75	1.75	1.28	0.19	0.25	0.88	0.44	0.16	9.83
2BK110H	10.75	10.00	10.40	3	1.75	1.75	1.28	0.19	0.24	0.89	0.44	0.16	11.91
2BK120H	11.75	11.00	11.40	3	1.75	1.75	1.28	0.19	0.25	0.88	0.44	0.16	13.30
2BK130H	12.75	12.00	12.40	3	1.75	1.75	1.28	0.19	0.25	0.88	0.44	0.16	15.25
2BK140H	13.75	13.00	13.40	3	1.75	1.75	1.28	0.19	0.25	0.88	0.44	0.16	16.61
2BK160H	15.75	15.00	15.40	3	1.75	1.75	1.28	0.19	0.25	0.88	0.44	0.16	19.27
2BK190H	18.75	18.00	18.40	3	1.75	1.75	1.28	0.20	0.24	0.88	0.44	0.16	23.53

### CLAMP FIT ON SHAFT



### COMBINATION GROOVE



Part Numbers are specified by "H" and bore size. Example: "H - 1 1/8"

\*These sizes are furnished with special keys to fit standard depth keyseats.

TABLE No. H BUSHING

BUSHING	L	U	T	D		H	V	W	X	Y	R	S	BORE RANGE		CAP SCREWS		AVG. WT. LBS.	WRENCH TORQUE IN-LBS	CAPSCREW HEAD PROJECTION
				LARGE END	SMALL END								No.	SIZE					
				TYPE 1	TYPE 2														
H	1 1/4	1/4	1	1.625	1.571	2 1/2	2	-	14/16	3/16	1/8	3/16	3/8 - 1 1/8	1 7/16 - 1 1/2	2	1/4-20 x 5/8	0.8	95	0.16